

# SonoScape

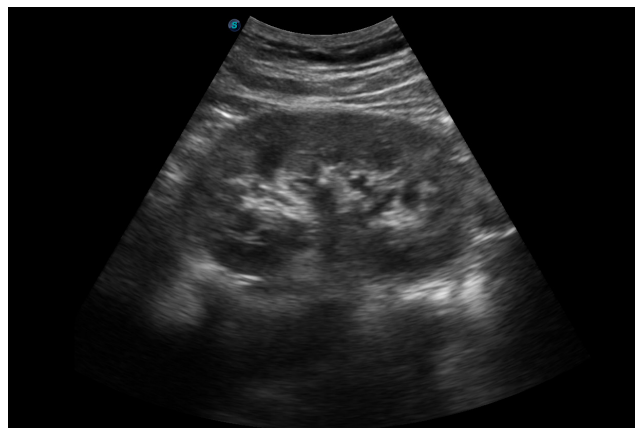
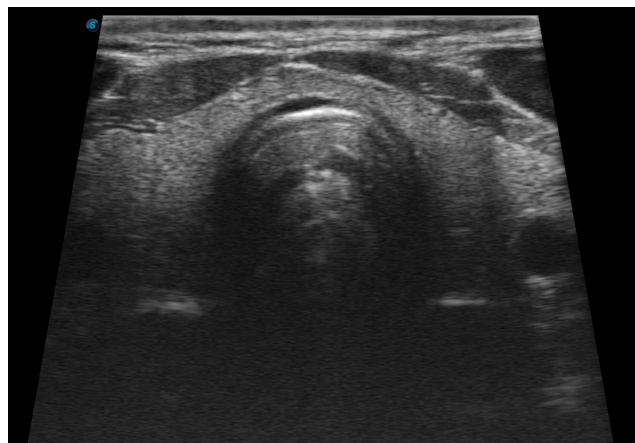
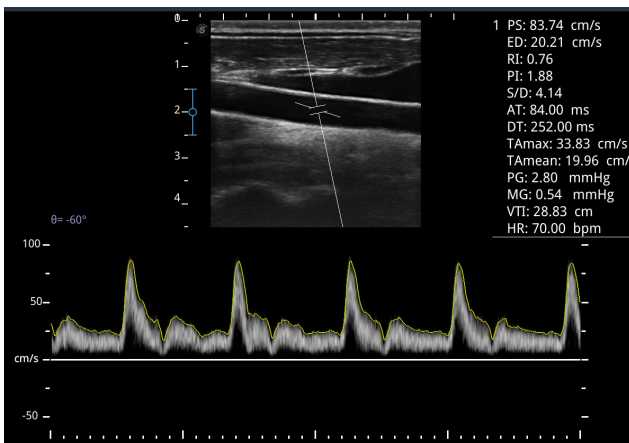
Caring for Life through Innovation

# smt ULTRASCHALL

## E<sub>1</sub>



E1, as a new hand carried BW ultrasound model, is equipped with complete functions which enhances its competitiveness to entry level ultrasound models. It not only provides satisfying image quality but also brings users a smooth workflow experience.



## ■ Efficient Diagnosis

μ-Scan - Speckle Reduction & Edge Enhancement  
Spatial Compound Imaging  
PIH - Pure Inversion Harmonic  
Wide Scan - Enlarge Image Area  
PW Doppler  
Chroma - Highlight Image Details  
B Steer for Linear Probe

## ■ Ease of Use

Quick Boot Up  
Auto Brightness Adjustment  
Auto Image Optimized  
Auto IMT  
Auto Trace

## ■ Ergonomic Design

3 Transducer Ports  
Light Weight and Compact  
15.6 inch Anti-flickering HD LED Screen  
Tilting Monitor Angle Adjustment  
Backlit Keyboard and Intelligent Panel  
Long-lasting Battery for 90 mins

## ■ Expansive Accessories

Wi-Fi and Bluetooth Available  
DICOM 3.0  
500GB Hard Disk  
Height Adjustable Trolley  
Durable, Carry-on Site Suitcase



**STEINBERGER MEDIZINTECHNIK**  
Zentrale Regensburg

Kirchplatz 5  
93087 Alteglofsheim

Telefon 0800 – 8811 001  
Fax 0 94 53 – 99 75 40  
E-Mail [info@smt-ultraschall.de](mailto:info@smt-ultraschall.de)

Vereinbaren Sie einen  
persönlichen Beratungstermin –  
wir freuen uns auf Sie!

## **SonoScape**

*Yizhe Building, Yuquan Road, Shenzhen, 518051, China*

**Tel: 86-755-26722890**

**Fax: 86-755-26722850**

*E-mail: [sonoscape@sonoscape.net](mailto:sonoscape@sonoscape.net)*

**[www.sonoscape.net](http://www.sonoscape.net)**



**ISO 13485**

**CE 0197**